



# Weiss Words

**GREGG K. WEISS**

Palm Beach County Commissioner, District 2

## Newsletter

**June 27, 2024**

### Follow Us On Social Media



#### ***In this newsletter:***

- What Gregg's Been Up To
- Free Guide Explorations of the Great Outdoors
- Food Prep for Hurricane Season
- AI Outlook
- Gregg in the News
- Commish in the Community
- Elections 2024

### What Gregg's Been Up To

In our last newsletter we talked about housing and traffic, both topics that are front of mind for residents and elected officials. How we develop, where we build, and how we move around are very much related to one another. Palm Beach County initially developed when there was lots of land, allowing for low density development. Car was king and there was little need for planning. This resulted in what's called urban sprawl. As the county continues to develop, land is becoming scarcer, lot sizes smaller, and roads more crowded. There's a need for more thoughtful planning. How can we continue to accommodate the growth of our population without overburdening our infrastructure? That's a tough nut to crack, but an issue we're all grappling with.

Over the years, county planners have come up with several tools to direct the growth where it is most suitable. At the June 18 workshop, county staff presented the board with an overview of these tools. One of them has to do with something called Transferable Development Rights (TDR). Here's how it works: the county is divided up into parcels of land. In most cases owners of these parcels can build something on it. That's called a development right. TDRs allow for the transfer of development rights from certain "sending" areas into certain "receiving" areas. In other words, you're moving density from

areas that aren't suitable for development - such as natural areas - to places that are better suited for development because they have the location, infrastructure and services that can handle the additional development. "Density" refers to how much an owner of a parcel is allowed to put on the piece of land (one home or two). The county can grant someone additional density. That's called a density bonus. Density bonuses make redevelopment of certain Urban Redevelopment Areas more attractive. The Workforce Housing Program works on the same idea. In exchange for additional density for developers, the county gets much-needed housing that's affordable for working persons and families. Staff addressed several of the commissioners' questions and concerns that have come up over the years, and talked about ways to improve the program. If you're interested in learning more, watch the workshop [here](#).

Finding a suitable and affordable place to live is hard for many essential workers in our county, so much so that a large number of them are living in Saint Lucie County, where prices are lower. Making this move results in a long commute, essentially adding more hours to a work week while also spending more on gas and car maintenance. To help these commuters, many of whom are county employees, PalmTran is experimenting with a new option called the Port Saint Lucie (PSL) Express. On June 18 the board approved this pilot program that's funded through a grant from the Florida Department of Transportation. On weekdays, the PSL Express will travel north and south on I-95 between West Palm Beach's TriRail station and Gatlin Park in Port Saint Lucie. There will be two morning trips and two evening trips, taking about 50 minutes one way, and costing 3 bucks for a one-way ticket. The Palm Beach Post's Mike Diamond [wrote about it](#).

At a conference of the Florida Association of Counties (FAC) in Orlando, Gregg was recognized for his service. On June 26 he received the FAC Presidential Advocacy Award for his contributions to policy development.

Have a safe and happy Fourth of July Holiday - and thanks for being a reader!

## Free Guided Explorations of the Great Outdoors

Join Palm Beach County's Environmental Resources Management team in exploring the natural side of the county! These FREE naturalist-led events that will provide a one-of-a-kind learning experience while getting outdoors hiking, photographing nature, paddling, cycling, and much more! The events are open to the public on a first come, first serve basis. Reservations are required (click on the button below) and events are subject to change due to weather conditions.

[Click For a Schedule of All Events](#)

Free Events!

SUMMER

Adventure Awaits

JOIN US FOR A FREE ADVENTURE!  
KAYAKING, TRAIL RUNNING, HIKES, WILDFLOWER WALKS, AND MORE...  
INFO AT [WWW.PBCERM.COM](http://WWW.PBCERM.COM)  
REGISTER AT [PBCERM.EVENTBRITE.COM](http://PBCERM.EVENTBRITE.COM)



## Food Prep for Hurricane Season

In the event of a hurricane it's recommended to have at least a week's worth of nonperishable food items and 1 gallon of water per person per day for up to 5 days. Not sure what else to include? Palm Beach County has a list of food items to include in your

[hurricane preparedness kit.](#)



## WHAT DO YOU NEED TO PREPARE FOR A HURRICANE?

### FOOD



Commissioner Gregg K. Weiss  
District 2  
Palm Beach County  
Board of County Commissioners



Water & ice  
or dry ice



Shelf-stable  
beverages



Canned  
food



Dried  
fruits



Snacks



Bread



## AI Insights

### Artificial intelligence (AI) Used to Predict Parkinson's Up to Seven Years Before Onset of Symptoms

Researchers from University College London and University Medical Center Goettingen have developed an AI-based blood test that can predict Parkinson's Disease (PD) up to seven years before symptoms appear, with 100% accuracy. The researchers aim to continue monitoring patients for further validation and hopes to create a simpler blood spot test for even earlier PD prediction.

[Click to Read More](#)

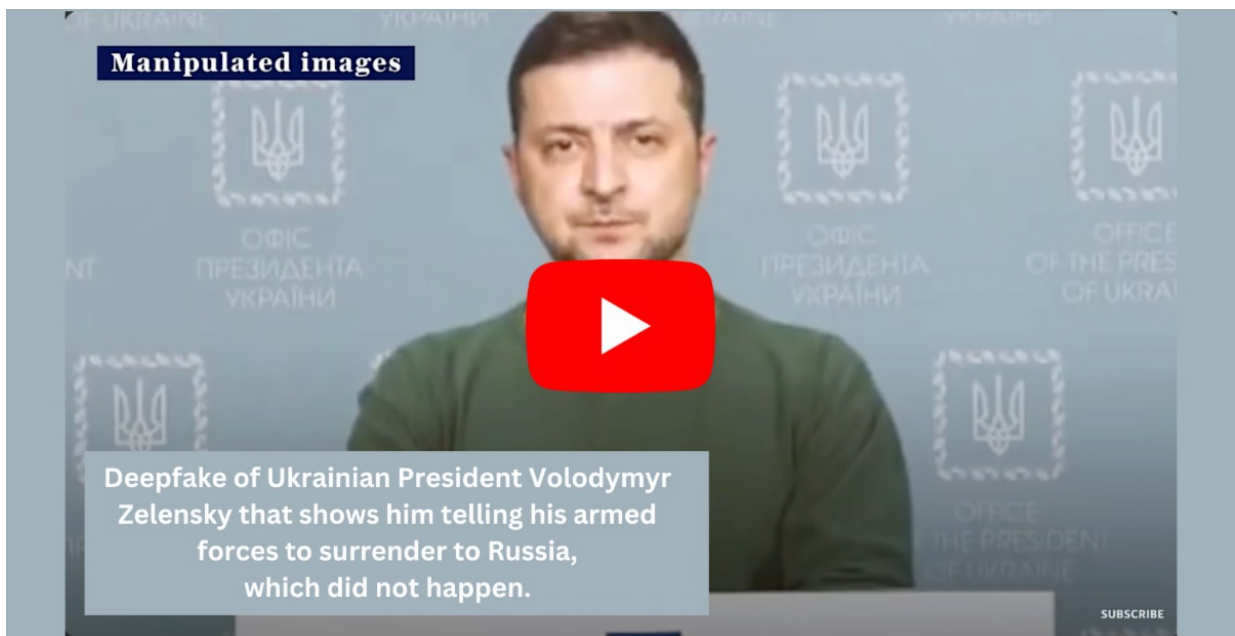


## AI You Can Use



### How to Spot Fake AI-Generated Content (Deepfakes)

Hey everyone! Jana here. I'll bet you've come across an image that looks off or heard an audio recording that doesn't sound authentic. If so it's likely that the image or sound is a deepfake - something that's been manipulated or generated entirely by AI. To arm yourself against these phonies, [this article](#) has tips on how to spot them in photos, videos, and audio. It also highlights a tool called [DeepFake-o-meter](#), a free and open-source tool that can help to detect AI-generated content (though it's not always accurate). Don't have time to read the article? [Read the Key Points here](#). To watch a video that's been manipulated, click the Play button below.



## AI Calendar

**Note:** Not all events listed are open to the public.



7/10/2024 @ 12:00 PM: AI Lunch and Learn at the The Buena Vida Community in Wellington. Contact Pamela Avalos for more information.

8/6/2024 @ 6:30 PM: AI presentation for Radio Aficionado Club (Zoom presentation). Contact Henry Seidner for more information.

8/7/2024 @ 12:00 PM: AI presentation for the West Palm Beach Kiwanis Club at Hilton Airport Hotel. Contact Dan Ayers for more information.

If you would like to invite Commissioner Weiss to give a presentation in your community on artificial intelligence or any other topic, contact our office at [district2@pbc.gov](mailto:district2@pbc.gov) or 561-355-2202.



**Sun Sentinel:**

**First came the payout from opioid settlement. Now, how will millions be used in South Florida?**

**Palm Beach Post:**

**Commuter St. Lucie Express \$3 bus trips to West Palm Beach coming in September**

**Commish in the Community**

**Celebrations, anniversaries, meeting with agencies, recognizing community**

leaders, joining neighbors' festivities and going to neighborhood meetings ...  
Commissioner Weiss spends a lot of time in the community.

"As an elected official, I want to be part of the community I represent," said Commissioner Weiss. "I want to understand the issues in my district, and that's why I spend many evenings attending events to listen and learn."

**If you'd like to invite Commissioner Weiss to your event, let us know.**



### Demystifying AI For County Leaders

Gregg got to moderate a workshop on his favorite topic at the Florida Association of County Conference on June 27th. Titled, "Demystifying AI For County Leaders," the workshop offered practical demonstrations of AI applications relevant to county governance. Several experts talked about how AI can enhance decision-making processes, streamline administrative tasks within local administrations.



### Harold Grimes Park Renovation

The City of Lake Worth Beach celebrated the Harold Grimes Memorial Park Pavilion Renovation with a ribbon cutting event on June 20th. Gregg was delighted to be a part of this impactful project that was made possible by an ongoing collaboration between the City of Lake Worth Beach and Palm Beach County. More on the park upgrades [here](#).

**VISIT GREGG'S FACEBOOK PAGE**

**Elections 2024**

### Have You Registered To Vote?

Check your voter registration status today by visiting "My Status" at <https://www.votepalmbeach.gov>

**Voters wishing to vote by mail in the 2024 elections are required to make a new Vote-by-Mail Request for all elections.**

**[Click here to request a Vote-by-Mail ballot](#)**

## **2024 Primary Election Information:**

**Early Voting:** Aug. 10-18, 2024 (7 a.m.-7 p.m.)

**Election Day:** Tuesday, Aug. 20, 2024 (7 a.m.-7 p.m.)

**Deadline to request that a Vote-by-Mail ballot be mailed to you:  
5:00 p.m. on Thursday, August 8, 2024**

**Deadline to return your Vote-by-Mail ballot to Supervisor of Elections Main Office:  
7:00 p.m. on Tuesday, August 20, 2024**

## **2024 General Election Information:**

**Early Voting:** Oct. 21, 2024 - Nov. 3, 2024 (7 a.m.-7 p.m.)

**Election Day:** Tuesday, Nov. 5, 2024 (7 a.m.-7 p.m.)

**Deadline to register to vote: Monday, October 7, 2024**

**Early Voting: 7:00 a.m. - 7:00 p.m., October 21, 2024 - November 3, 2024**

**Deadline to request that a Vote-by-Mail ballot be mailed to you:  
5:00 p.m. on Thursday, October 24, 2024**

**Deadline to return your Vote-by-Mail ballot to the Supervisor of Elections Main  
Office:  
7:00 p.m. on Tuesday, November 5, 2024**

**Ideas? Suggestions? Concerns?  
Contact Us!**

**We're here to help you!**

**Commissioner Gregg K. Weiss**

**Office: 561-355-2202**

**Website: [pbcgov.com/D2](http://pbcgov.com/D2)**

**Email: [district2@pbc.gov](mailto:district2@pbc.gov)**

**Jana Panarites**

**Constituent Issues**

**[JPanarites@pbc.gov](mailto:JPanarites@pbc.gov)**

**Office: 561-355-1910 Cell: 561-267-0215**

**Niels Heimeriks**

**Constituent Issues**

**[NHeimeriks@pbc.gov](mailto:NHeimeriks@pbc.gov)**

**Office: 561-355-4966 Cell: 561-371-1089**