

See what we're up to!

May and June 2019 Project Status Reports

Thank you for staying connected with PBC ERM! Here's an update on projects underway to protect, preserve, and enhance the land and water resources of Palm Beach County.

We missed sending last month's newsletter email, so here's a two-for-one! Click on the images below to view the complete reports.

May 2019 Project Status Report

Department of Environmental Resources Management

Autism-friendly Natural Area Grand Opening: On May 9th, a ribbon cutting ceremony was held to announce the certification of North Jupiter Flatwoods Natural Area (NJF) as an Autism-friendly Natural Area by The Center for Autism and Related Disabilities. It is believed to be the first park or open space in the state to receive such certification. The certification was achieved by a partnership between the County's Adopt-a-Natural Area program and The Learning Academy at the Eis Center of Excellence. Autism-friendly improvements at NJF include resting benches, signage, fence modifications and sensory touch boards.



Derelict Vessel Removal: A derelict vessel was removed from the north end of Peanut Island in partnership with LagoonKeepers.org. The removal was paid for through Palm Beach County's Pollution Recovery Trust Fund.



Tarpon Cove: The project was awarded a \$1 million grant through the National Coastal Wetlands Conservation Grant Program in partnership with the United States Fish and Wildlife Service and Florida Fish and Wildlife Conservation Commission. The project was one of 22 projects nationwide, and the only project in Florida, selected by the program. This federal grant will be matched with state and local funds to construct future phases of the project. The Florida Inland Navigation District dredging project finished on May 25th with an estimated total volume of 84,800 cubic yards.



Palm Beach County Board of County Commissioners

Mack Bernard, Mayor, Dave Kenner, Vice Mayor, Hal R. Valente, Gregg K. Weiss, Robert S. Weinroth, Mary Lou Berger, Melissa McKinlay

June 2019 Project Status Report

Department of Environmental Resources Management

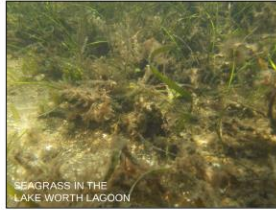
Tarpon Cove: In partnership with the Florida Inland Navigation District, over 4 acres of sand were placed to finish phase one of the project. Phase two began on June 21st with sand from the Rybovich Marina expansion, which will be placed on the southern end of the project, adjacent to Monceaux Park. Once the additional sand has been placed, the contractor will grade it and install rock to create three intertidal islands and oyster reefs.



Lake Worth Inlet Sand Transfer Plant: ERM coordinated the purchase and installation of a new suction hose for the plant. The Town of Palm Beach owns the plant and paid for the \$10,000 hose, which was installed by Palm Beach County Road and Bridge staff.



Derelict Vessel Removal: Two derelict vessels were removed from the Phil Foster Park area and one from Bryant Park. The removals were paid for through Palm Beach County's Pollution Recovery Trust Fund.



Seagrass: In partnership with the South Florida Water Management District, ERM staff conducted seagrass monitoring at four permanent monitoring sites in the Lake Worth Lagoon. Several species of seagrass were documented in the northern lagoon sites, including turtle grass, shoal grass, and paddle grass. Paddle grass was also found at one site in the central lagoon after several years of being absent.

Pondhawk Natural Area: A research permit has been issued to a graduate student from FAU. The focus of the student's research is to document the use of gopher tortoise burrows by other animals. These commensal species use the burrows for food, refuge, and other benefits.



Palm Beach County Board of County Commissioners

Mack Bernard, Mayor, Dave Kerner, Vice Mayor, Hal B. Valche, Gregg K. Weiss, Robert S. Weinroth, Mary Lou Berger, Melissa McKinlay



Palm Beach County
Board of County Commissioners
Environmental Resources Management

PBC ERM | 2300 N. Jog Road, 4th Floor, West Palm Beach, FL 33411